

Introduction to Benchware Discovery D360⁰

Executive Summary

Benchware[®] Discovery 360⁰ (D360) allows organizations to improve their research efficiency in a cost effective manner by allowing research scientists to readily access, analyze and share their data. The product has demonstrated excellent usability, high performance query capability, comprehensive data analysis functionality and scalability to 1000s of users.

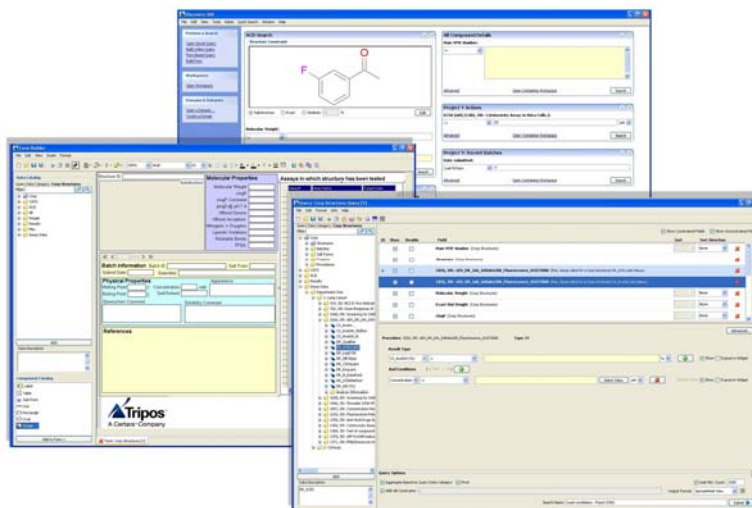
“After working with Tripos, our colleagues internally and with Accenture, we were able to put D360 in play February, 2008. To date, we have deployed to over 700 scientists, including chemists and biologists ranging in specialties. We’ve been very pleased with the feedback from scientists. They have come to us and said they have seen tremendous time savings and can use D360 to ask questions of the Wyeth data that simply weren’t possible before, or would take hours for the query to actually return with information. The scientists have been finding a functionality that they didn’t have access to before and seem to be generally enthusiastic about using it....”

“Overall, the benefit we’re seeing is how this application is giving scientists time to focus on science and innovate and extend their capabilities.”

-Steve Howes, Senior Director, Bioinformatics, Wyeth Pharmaceuticals
Excerpt from Future Pharmaceuticals podcast April 2009

Data Access

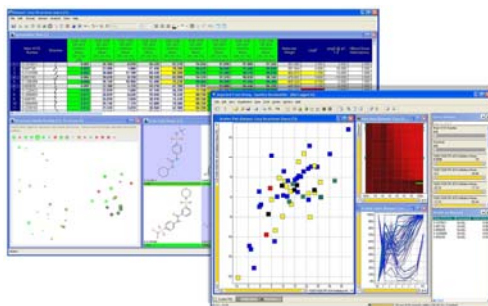
D360 is a multi-tiered application that allows researchers to effectively access, analyze and share vast quantities of research data of a complex nature. D360 allows both simple and complex query construction covering different aspects of research data (chemical, biological, logistical...) through intuitive building interfaces. Queries can be easily stored and shared with project team members and research managers or exposed as simple searches for the most common research workflows.



**Main Application window (top) showing QuickSearch widgets.
Form Builder Interface (left) with partially built Form template and
Query Builder window (right) containing constrained query.**

Data Analysis

Users can readily generate and *explore research data* to gain the understanding that drives projects forward through multiple, interlinked data viewers along with Tripos' established R-Group analysis and structure similarity projections. D360 allows visualization of complex, multidimensional datasets through forms, chemically aware spreadsheets, grids, graphs & charts along with Tripos' innovative structure similarity maps. Advanced analysis capabilities are provided through built-in integration with 3rd party analysis and statistical tools (TIBCO Spotfire, SAS, JMP...) or through integration of proprietary scientific techniques through D360's APIs.



D360 dataset window showing integrated Spotfire viewer.

Sharing

Effective reporting is ensured by the smooth data export functionality to 3rd party applications including MS Excel & PowerPoint.

Project Management and Decision Support is an integral part of D360 and allows effective knowledge sharing through a fully configurable personal and shared workspace system supporting audit trailing and access rights assignments.

Who is using D360?

Benchware[®] Discovery 360[°] has proven to reduce the amount of time scientific teams spend on retrieving, manipulating, analyzing and distributing knowledge and leads quickly to a strong return on investment.

You will be interested in D360 if:

- Your researchers spend significant amounts of time and effort getting to and understanding their data.
- Your researchers need to use multiple applications to generate the data views they need.
- You find inter-project comparisons difficult due to data package inconsistencies.
- You are considering building a data access and analysis system in house.
- You are replacing or enhancing an existing in-house developed system.

Summary

Benchware[®] Discovery 360[°] (D360) is the first comprehensive product solution that provides life science researchers a *single point of access* to retrieve, analyze, and share scientific data. It eliminates time-consuming, error prone, non-productive hours that scientists spend merging and manipulating data from multiple, disparate sources. Using D360, assembly of a project SAR dataset is reduced from hours to minutes allowing researchers to spend more time at the bench.

D360 is the only enterprise application for pharmaceutical data access, analysis, and sharing that is both easily configured to the requirements of a particular research organization *and* can provide the scalability and performance necessary for even the largest life sciences organizations. D360 is a product solution rather than a one-off custom development and has been deployed to thousands of scientists to increase the speed, accuracy, and effectiveness of research.